

# Welcome to the Year 7 Parent Information Evening



# Year 7 Pastoral Team



Mrs Lajszczuk  
**Pastoral  
Leader**



Mrs Lowe  
**Assistant  
Pastoral  
Leader**



Miss Joseph  
**Assistant  
Pastoral  
Leader**



Mr Manning  
**Year Manager**


- Please only enter the school site via Reception if you need to speak to a member of staff urgently.

- We do not give out our individual email addresses.
- When you email [info@guiseleyschool.org.uk](mailto:info@guiseleyschool.org.uk), your email is forwarded onto all 4 members of the team.
- If you know the name of the member of staff you need, please write FAO Mr/Mrs \_\_\_\_\_ in the subject box.



# Check and sign your child's planner

- The planner is a record of their homework, stamps and negative comments.
- The notes section on the weekly planner page is a quick method of communicating with your child's form tutor.
- You need to sign your child's planner **and** reading log at the end of each week.



**Achievement and Behaviour**

House Points	Total House Points

**Achievement Stamps**

Code	Subject and Information	Date	Initial

**Notes**

Cumulative Attend

Parent/Carer signature

**Reading Record**

Week	Title of Book	Pages	New/Challenging Words	Signed by Parent/Carer
1				
2				
3				
4				
5				
6				

Total Pages Read Overall:



# Support the 'at home' routines

## Guiseley Routines

### 1. At home, we:

- Make time to complete homework
- Pack our bag the night before, completing an equipment, planner and book check
- Prepare our full uniform ready for the next day
- Set our alarm to allow enough time to get ready in the morning
- Get a good night's sleep.

### 2. When we arrive at school, we:

- Gone to the toilet if we need to
- Filled up our water bottles
- Checked our uniform is correct
- Seen pastoral staff during break and lunch – not at the end.

### 3. A Great Guiseley Lesson:

#### a) At the start, we:

- Are punctual
- Are met by our teachers who greet us and check our uniforms
- Sit where we are asked to sit
- Open our planners on the correct week and put equipment on the desk
- Engage in discussion with the teacher
- Answer the questions

#### b) Throughout:

- Contribute
- Listen actively
- Ask questions
- Take pride
- Allow teachers to manage the class
- Push ourselves
- Don't give up
- We follow the rules

#### c) At the end of:

- Check our work
- Help to tidy
- Stand quietly
- Leave in order

### 4. Around school:

- Wear uniform
- Do as we are asked
- Eat and drink
- Do not chase
- Walk around
- Respect the environment
- Always be safe
- Keep all equipment
- Respect the staff

## 1. At home, we:

- Make time to complete homework
- Pack our bag the night before, completing an equipment, planner and book check
- Prepare our full uniform ready for the next day
- Set our alarm to allow enough time to get ready in the morning
- Get a good night's sleep.



# Support the 'at home' routines

'Pack our bag the night before, completing an equipment, planner and book check'



## Compulsory Equipment:

- Planner
- Lanyard (this consists of a card, cardholder and string)
- Pen
- Whiteboard Pen
- Pencil
- Green Pen
- Ruler
- Books for the day
- Reading Book
- PE Kit
- Scientific Calculator
- Headphones (3.5mm jack)
- Protractor
- Compass
- Glue Sticks
- Pencil case

## Recommended Equipment:

- Coloured Pencils
- Small Scissors
- Highlighters



**GUISELEY  
SCHOOL**

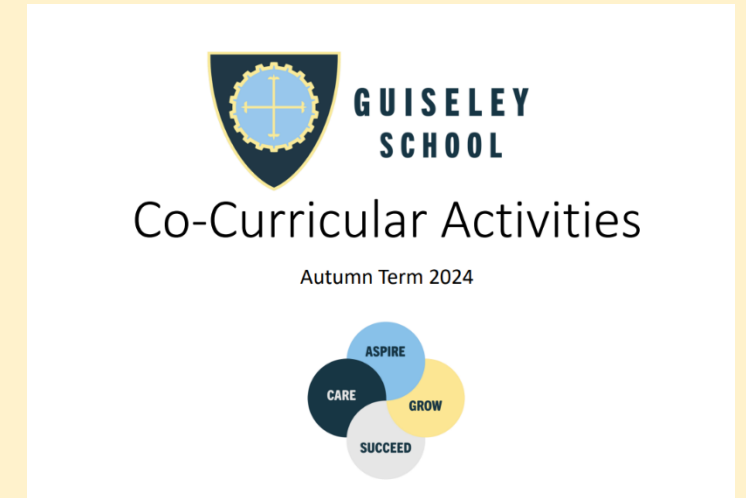
# Attendance

- The report an absence, call 01943 872315 before 8.30am for each day of absence.
- The Department for Education guidance is clear that the target for all school children should be 95% or over.
- The Year 7 Team and Attendance and Welfare Officers in school will take swift supportive action to combat drops in attendance.



# Encourage involvement in co-curricular activities

- You will be emailed a digital copy of our Co-Curricular Activities booklet.
- You can also find a copy on our website.
- Most activities take place from 3-4pm.
- Some activities take place at lunch time.



Geography						
Staff Initials	Staff name	Activity	Year	Day	Time	Where
RBO LMN PDY JAM	Geog Staff	GEOGSOC	ALL	WEDS	3-4PM	F106

History						
Staff Initials	Staff name	Activity	Year	Day	Time	Where
JG	Mr Gracey	The Guiseley Union Debating Society	All	Weds	3.10PM-4PM	F107
OWR	Mr Walker	Guiseley Historical Society	KS3	Thurs	3.10PM-4PM	F112

MFL						
Staff Initials	Staff name	Activity	Year	Day	Time	Where
SHN	Mrs Harrison	Duolingo League	Year 7-13	Online	Whenever	At home
SDA	Ms Davies	Year 8 MFL Spelling Bee - German	Year 8	Ongoing through Term1 and 2		F004
SGE	Mrs George	Year 8 MFL Spelling Bee - Spanish	Year 8	Ongoing through Term1 and 2		F005
STS	Mr Thomas +MFL Dept	GCHQ National language competition	Year 9 (Potentially 7+8)	All week Monday 18 November - Friday 22 November	Lunch and after school	F block computer rooms



# Reading





# Summer reading – ‘the summer dip’

- Summer reading challenge – thank you!
- Certificates for those who took part
- Around 100 took part – we know it’s hard to motivate reluctant readers after primary school!
- Establishing good reading habits in Year 7 is key (especially with phones and social lives taking priority!)



# Why is reading so important?

- It improves **academic results**
- It helps students **understand and access difficult texts** inside and outside school
- Students need a reading age of 16+ to access GCSE examination papers in all subjects
- It widens **vocabulary**
- It helps **mental wellbeing**
- It improves **sleep patterns**
- Learn about other people and **cultures and experiences**



# Guiseley School's approach to reading

```
graph TD; A[Guiseley School's approach to reading] --> B[Improving reading skills:]; A --> C[Creating independent readers:]; B --> D[Support in lessons]; B --> E[1:1 interventions]; C --> F[Form time reading]; C --> G[Reading homework];
```

## Improving reading skills:

Decoding

Fluency

Comprehension

Support in  
lessons

1:1  
interventions

## Creating independent readers:

Building personal reading habits

Finding the right books

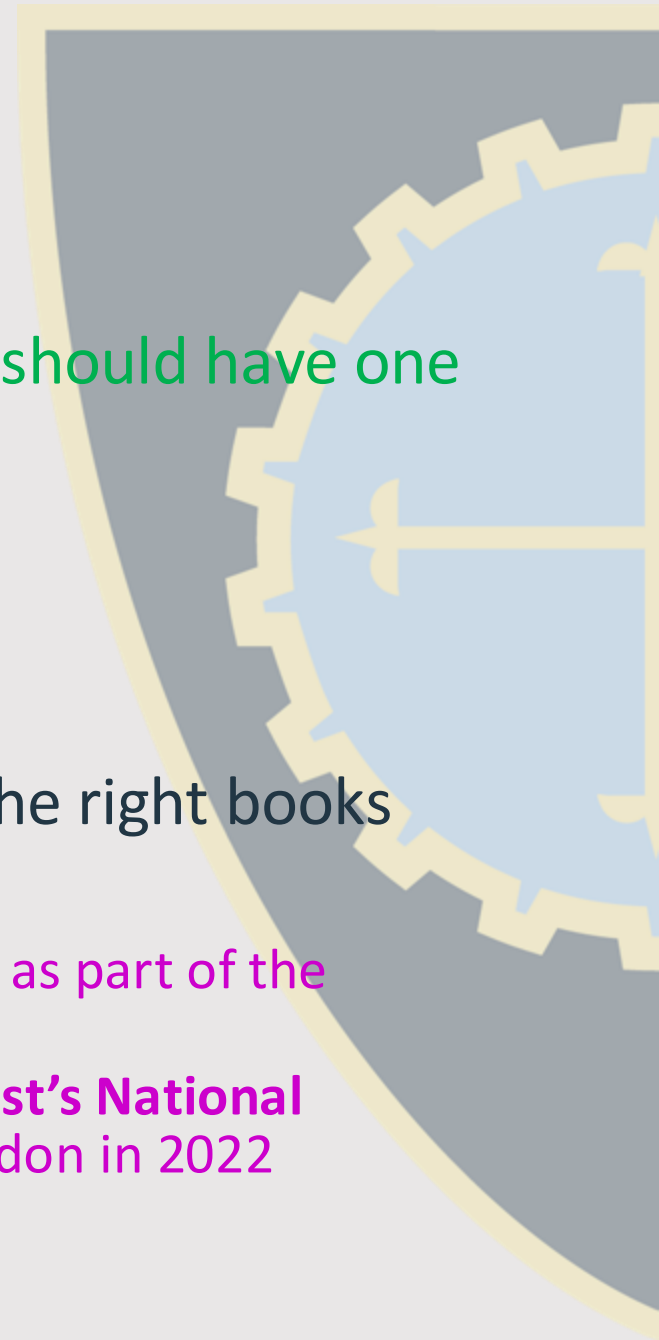
Engaging students with stories

Form time  
reading

Reading  
homework

# How do we help students to become 'independent readers'?

- A reading book is part of the **school equipment** – students should have one with you every day
- Private reading is part of **form time**
- Reading is part of their **homework**
- The **library** is open for all year groups during the week
- We give book **recommendations** to help students choose the right books
- We **celebrate reading success**
  - Our school community read for over 300,000 minutes this holiday as part of the **Guiseley School Summer Reading challenge**
  - Guiseley School's Team won their regional heat in the **Literacy Trust's National Reading Champions Quiz** and came 6<sup>th</sup> in the national final in London in 2022
  - Prizes for students who read over **5000 pages**



# How can you help your child's reading?

READING RECORD				
Week	Title of Book	Pages	New/Challenging Words	Signed by Parent/Carer
1				
2				
3				
4				
5				
6				
			Total Pages Read Overall:	

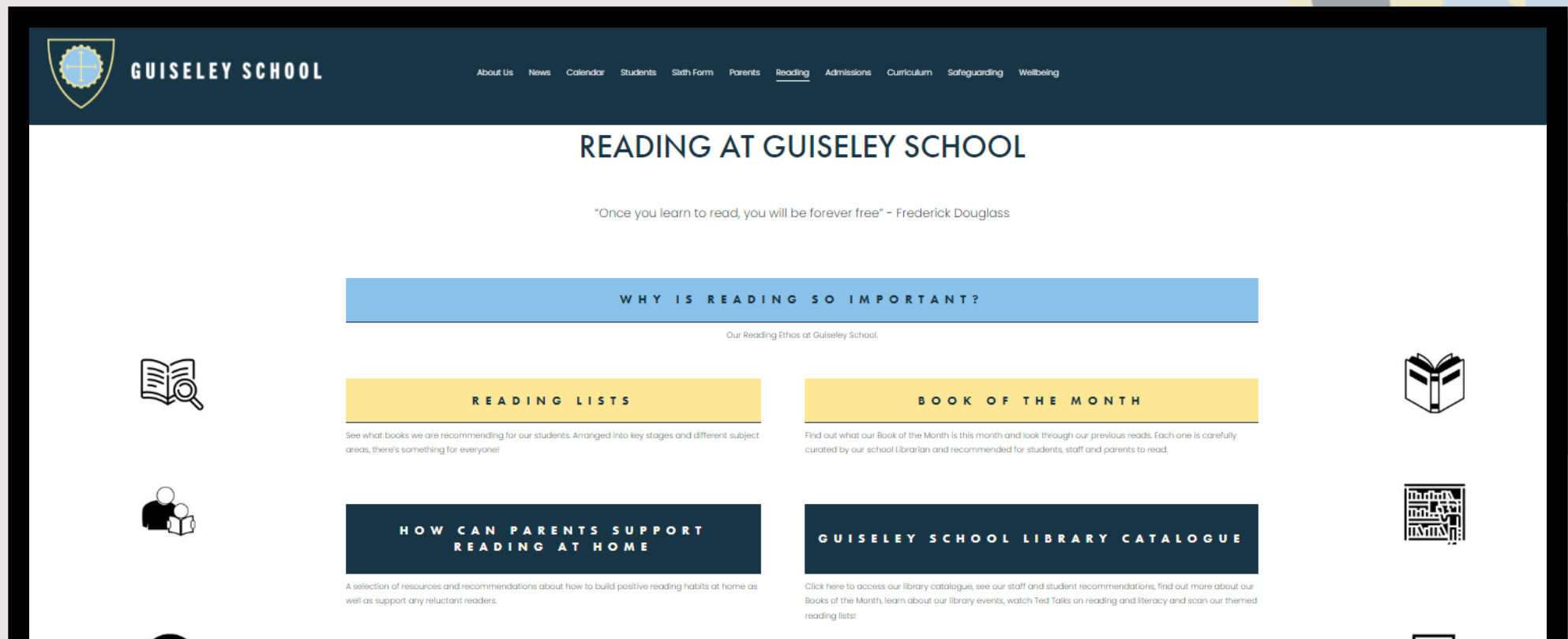
# How to help your child's reading at home

**National Literacy Trust Survey 2023:** Nearly **three times** as many children and young people who perceived their **reading environment to be supportive** said they **enjoyed reading** compared with those who perceived it to be less supportive (63.9% vs. 25.4%), while **twice as many read daily** in their free time (41.7% vs. 17.7%)

- Time and space to read – build **routines**
- **Talk to them** about what they are reading in and out of school
- **Read together**
- Encourage **reading for pleasure** and not just for function
- Audiobooks
- Book of the month
- Book lists

# For more information, book recommendations, access to the library catalogue...

<https://www.guiseleyschool.org.uk/reading>



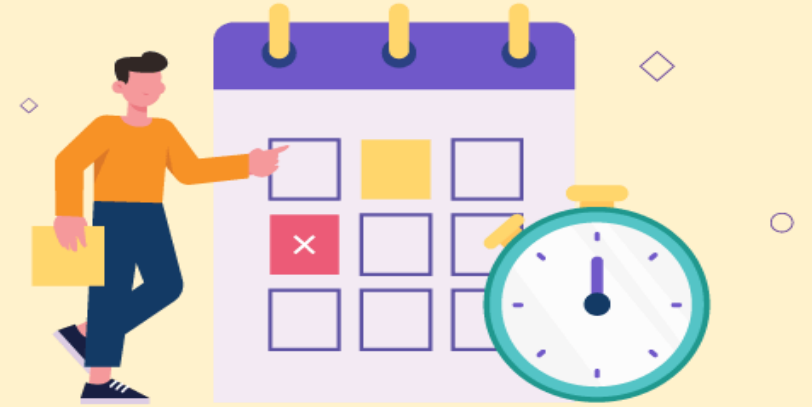


# Behaviour and Safeguarding



# Expectations at secondary school

- Attendance
- Punctuality
- Uniform
- Equipment
- Respect
- Attitude to Learning



# Ethos

- To be the best version of yourself, every day
- High Support
- High Challenge



# Rewards

- Stamps
- Clean slate bonus
- 100% attendance for a week bonus
- Praise phone calls and emails
- Certificates and badges
- Postcards and crests
- Termly celebration assemblies
- Annual awards evenings



# Guiseley Honours

## Guiseley Honours Tracking

At the end of each half term your Form Tutor will update you on which criteria you are achieving. If you are currently hitting the criteria give yourself a tick ✓ and if you are not give yourself a X.

Half Term	Att 97%+	Effort	Behaviour No DT/ISO/FTS	House Points Platinum	Postcards			
1					C	A	G	S
2					C	A	G	S
3					C	A	G	S
4					C	A	G	S
5					C	A	G	S
6					C	A	G	S







# GUISELEY SCHOOL SAFEGUARDING TEAM



**Mr Richard Wood**  
Deputy Headteacher and DSL



**Ms Jo Welbourne**  
Deputy DSL



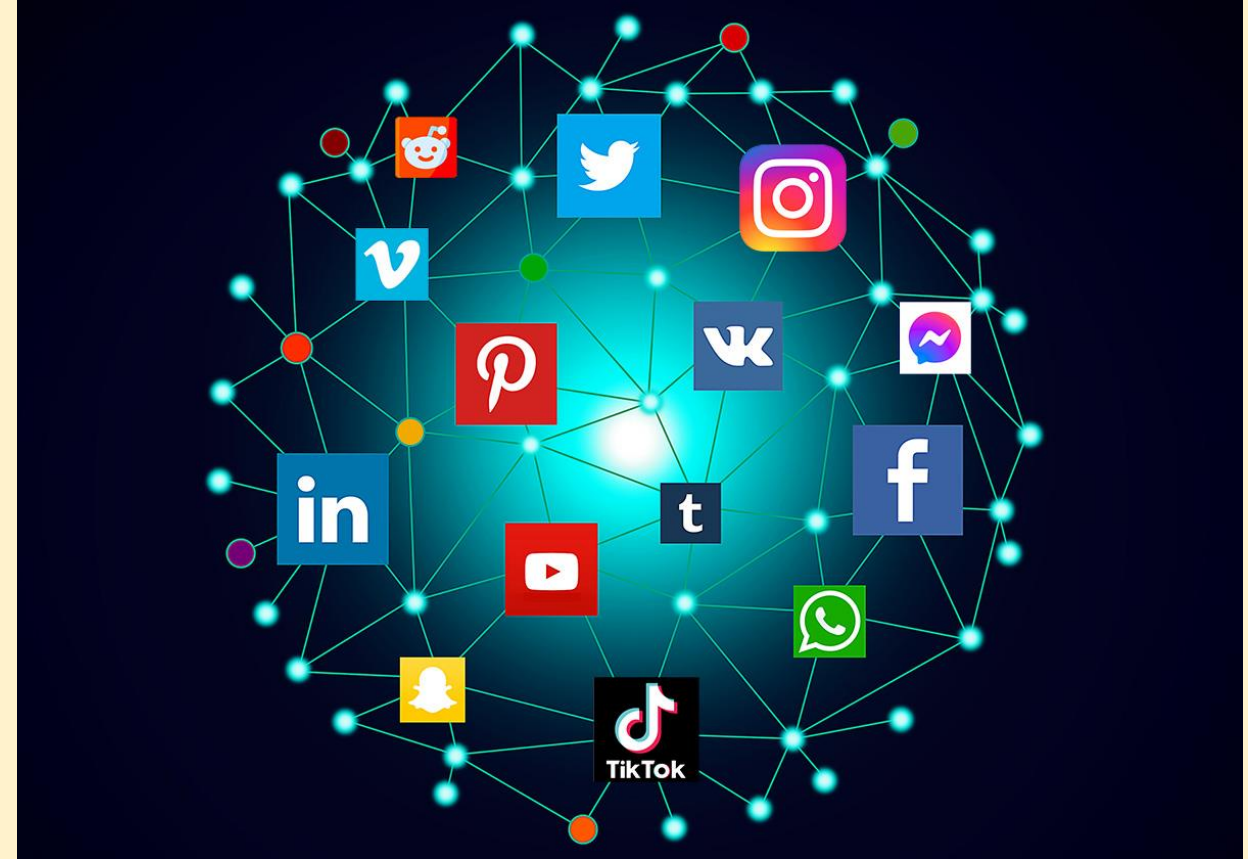
**Miss Roseann Millington**  
Mental Health and Wellbeing Lead



**Mrs Debra Parkin**  
Safeguarding Administrator



# Online safety and social media





# Advice about social media

- Mobile phones are a significant safeguarding risk to children.
- Do not be afraid to monitor, block, unfriend and remove.
- Friend/follow your child, so you can see what they are sharing with the world.
- Tell your child to avoid large, new group chats.



# Teaching and Learning



# Homework

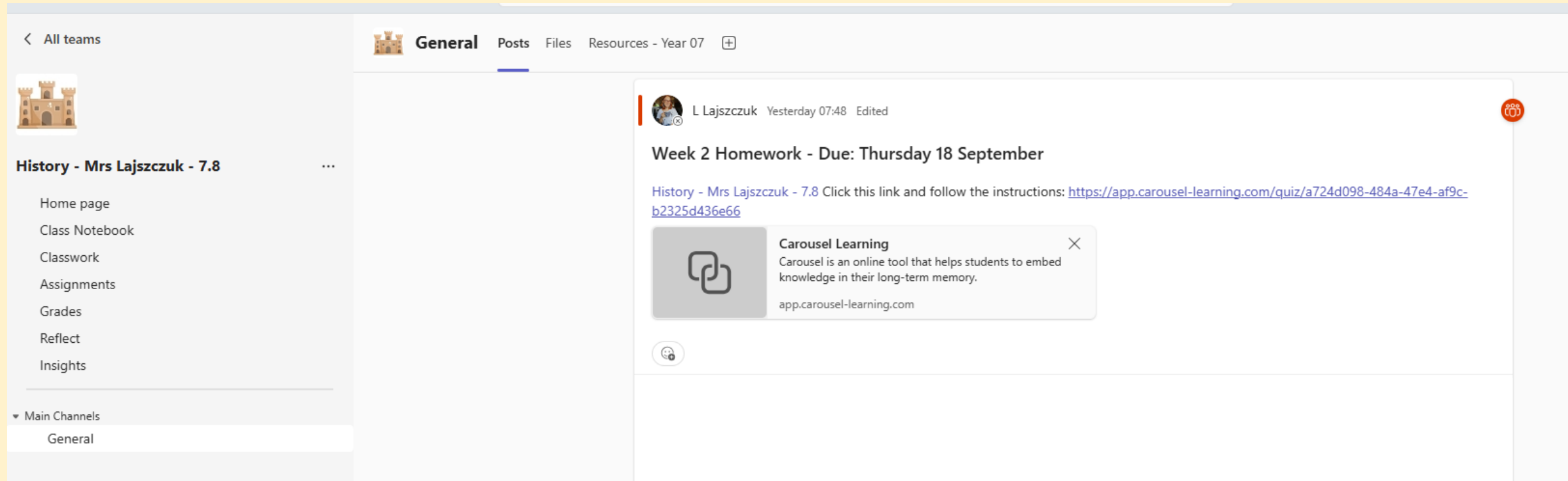
- 15 minutes of reading per night
- 30 minutes per timetabled subject per night
- Teachers post homework on Teams

Teaching Group	Monday	Tuesday	Wednesday	Thursday	Friday
1	Geography	English & Spanish	History	Science	Maths & German
2	Science	English	Spanish	Geography & History	Maths & German
3	German	English & Geography	Science	History & Spanish	Maths
4	German	English	Science & Spanish	Geography & History	Maths
5	Spanish	English & Geography	Science	German & History	Maths
6	Spanish	English & Geography	Science & German	History	Maths
7	German	English & Geography	Science	History & Spanish	Maths
8	German	English & Geography	Science	History & Spanish	Maths



# Microsoft Teams

Students log in using their school email address (username + @guiseleyschool.org.uk) and password



The screenshot displays the Microsoft Teams interface for a class channel named "History - Mrs Lajszczuk - 7.8". The left sidebar shows the "All teams" view with a castle icon and a list of items: Home page, Class Notebook, Classwork, Assignments, Grades, Reflect, and Insights. Below this is a "Main Channels" section with a "General" channel selected. The main area shows the "General" channel with a post from "L Lajszczuk" dated "Yesterday 07:48" and marked as "Edited". The post title is "Week 2 Homework - Due: Thursday 18 September". The post content includes a link: "History - Mrs Lajszczuk - 7.8 Click this link and follow the instructions: <https://app.carousel-learning.com/quiz/a724d098-484a-47e4-af9c-b2325d436e66>". Below the link is a "Carousel Learning" card with a logo of two interlocking squares and text: "Carousel Learning", "Carousel is an online tool that helps students to embed knowledge in their long-term memory.", and "app.carousel-learning.com". A small red notification icon is visible in the top right corner of the post area.



# Common homework questions

## What do we do if my child does not have access to a computer?

- Students can access Teams and the VLE on their phones and access SPARX and Carousel Learning via these platforms.
- Students can attend lunch time and/or after school homework club.

## What if my child has not written the homework in their planner?

- Students can check their class' Teams page using the log in details stuck into their planner.

## What is my child's school email address?

- School username + @guiseleyschool.org.uk



# Assessments, reports and parents' evening

- You will receive an attainment data report after each assessment week.
- **1<sup>st</sup> assessment week:** Week commencing Monday 5 January
- **2<sup>nd</sup> assessment week:** Week commencing Monday 15 June
- **Virtual parents' evening:** Wednesday 4 March



# Nell Bank trip

- **Wednesday 1st October – ABDC**
- **Thursday 2nd October – WXYZ**
- The school requests a voluntary student/parent/carers contribution of £30. This covers the cost of travel and the range of activities provided by Nell Bank.
- All parents/carers need to give their consent via the Arbor App.





# Settling-in afternoon

- **Thursday 6 November**

